

An introduction to United Learning

For Parents and carers at:

Nuneaton Academy

Hartshill Academy

George Eliot Academy

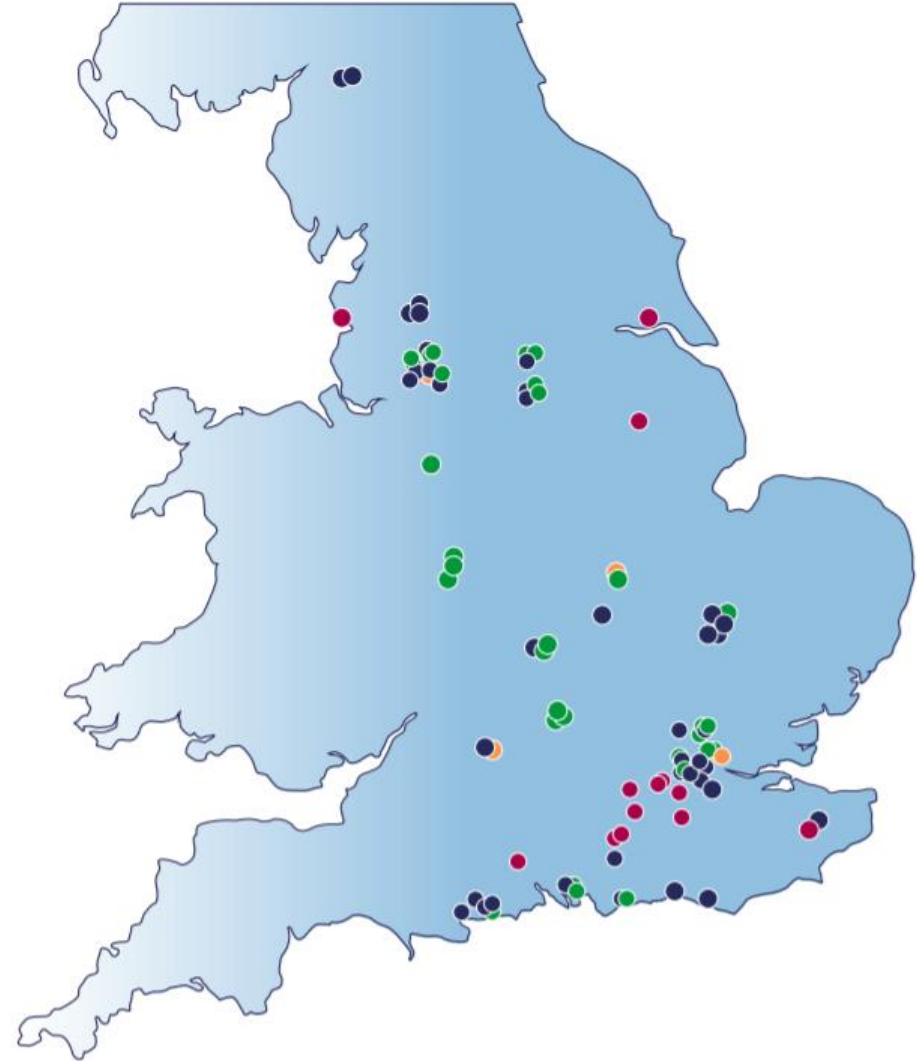
Ben Antell & Anna Paige

14 September 2023



A national group of local schools

- Founded in 1880s to provide education for girls
- ULT founded in 2002
- 92 schools – primary, secondary and all-through
 - 60,000 pupils
 - Around 9,000 staff
- Children first; serving the community; relationships based
- Targeted growth (create local clusters around existing footprint)
- One size does not fit all



Our basic model is this

- Heads run schools, report to their Regional Director with local challenge and support from the LGB
- Some central principles:
 - Framework for excellence
 - Financial benchmarks
 - Co-developed curriculum
- Accountability and support:
 - Termly reviews (challenge and support)
 - Subject specialist support
 - Other educational specialist support (e.g. SEND)
 - Finance, HR, Technology, data, marketing support
 - Compliance team – Co Sec, Safeguarding, Health and Safety, regulatory compliance.

The Framework for Excellence



The Framework for Excellence consists of five principles:

1. The best from everyone
2. Powerful knowledge
3. Education with character
4. Leadership in every role
5. Continuous improvement

Common strengths

- Each of our schools is unique, but there are common strengths:
 - Academically strong
 - High quality extra-curricular opportunities
 - Preparation for life beyond school
 - High quality sixth form provision
 - Strong record of success in Russell Group university entrance



What does this mean for children?

- Happy and secure in school – joyful education which prepares them for success in later life
- Ambitious and aspirational culture
- Help them to achieve their very best
- Children feel valued and listened to – including student surveys
- Focus on education with character
- Strong curriculum – both reflects their everyday lives and opens them up to new ideas and experiences
- Increased student opportunities – leadership programmes, music performances, university entrance programmes
- Independent – state collaboration

Group wide surveys

- Our annual staff survey runs every academic year (November), guaranteeing confidentiality
- Results from the November 2023 surveys will be shared with trust and school leaders
- **Action planning** on key priority areas will then begin
- Parent and pupil surveys run concurrently, enabling triangulation of results



United Learning Curriculum

- **Entitlement:** All pupils have the right to learn what is in the United Learning curriculum
- **Coherence:** Powerful knowledge builds term by term and year by year
- **Mastery:** We ensure that foundational knowledge, skills, and concepts are secure before moving on. Pupils revisit prior learning and apply their understanding in new contexts
 - **Adaptability:** The curriculum is stable but each school brings it to life in their own context
- **Representation:** All pupils see themselves in our curriculum, and our curriculum takes all pupils beyond their immediate experience
- **Education with character:** Alongside academic development, our wider school curriculum aims to develop the whole person. **#educationwithcharacter**



Secondary



Now viewing
Teacher Resources

Hello Stephen Adcock
SignOut

Teacher View

English

Mathematics

Science

Geography

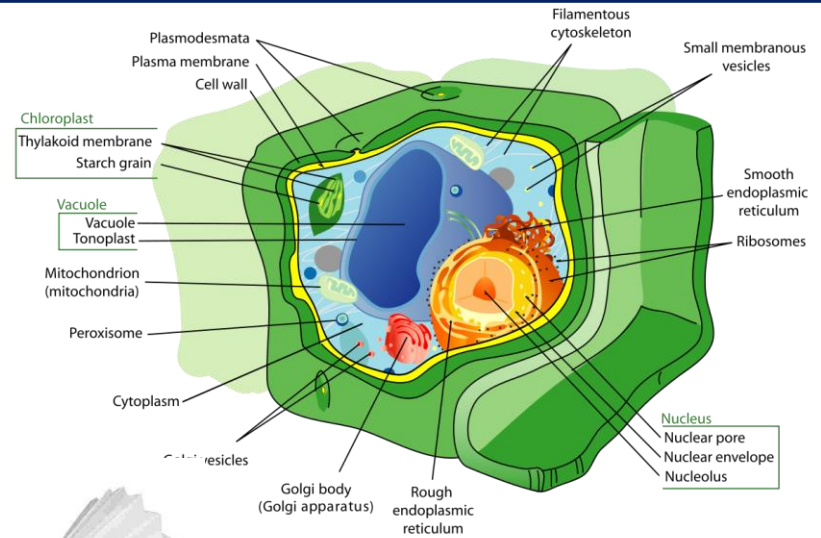
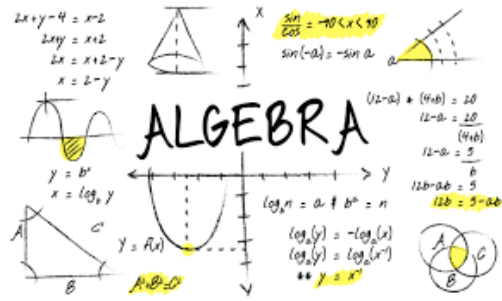
History

Modern Foreign Languages

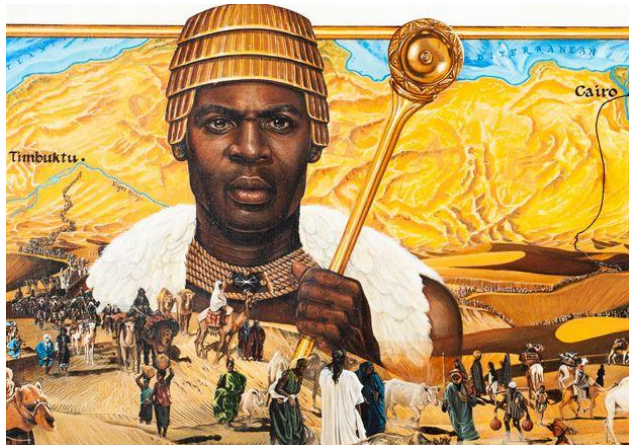
Music

Physical Education

Advantage #1 – Ambitious curriculum for all e.g. Y7



LINE
-tone
TEXTURE
SHAPE
PATTERN
COLOUR



Advantage #2 – No teacher teaches in isolation

- Subject advisers e.g. 6x HoD meetings per year in each subject
- Subject networks e.g. Sixth Form subjects
- Networks and webinars for attendance leads, behaviour leads, literacy etc
- Support networks for headteachers.



The best in everyone – our strategy 2021-2026

Great places to learn

Culture of achievement

Inviting atmosphere and environment

Powerful knowledge

Education with character

Great places to work

Teaching without disruption

Excellent professional development

High-quality environment and digital resources

Commitment to inclusion

Leadership in every role

A great group to join

High-quality central services

Strong local clusters

Group-wide networks

Financial and commercial acumen

A great contribution beyond the group

Influencing educational policy and practice

Supporting other schools and trusts

Supporting local communities

Sustainable and responsible operations